



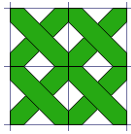
3D Cross Stitcher Stitch Guide



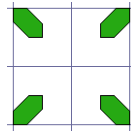
3D Cross Stitcher

Stitch Types

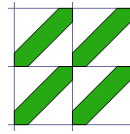
Positions of each stitch type in grid squares. Stitches are shown in 2D.



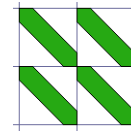
Full Cross



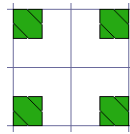
Quarter Cross



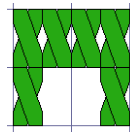
*Half Cross
Forward*



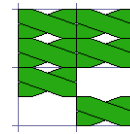
*Half Cross
Backward*



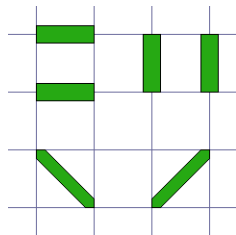
Mini Cross



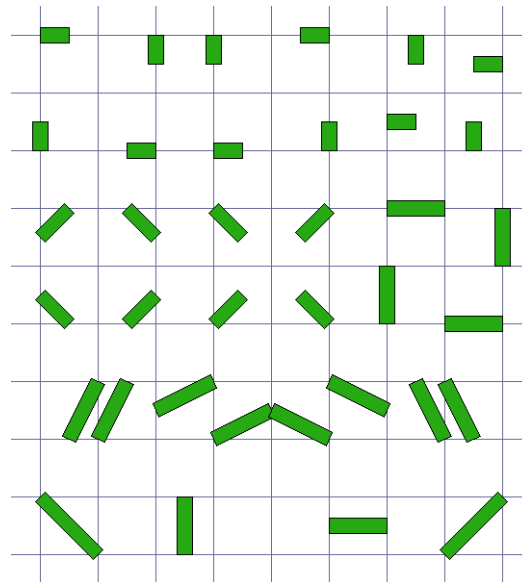
Half Width Cross



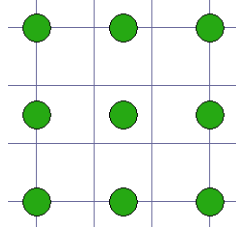
Half Height Cross



Standard Backstitch



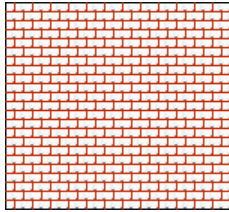
Freehand Backstitch



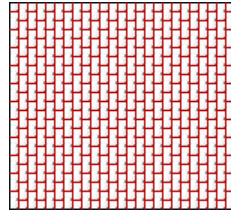
French Knot

Freehand Backstitch can also be placed across multiple grid squares.

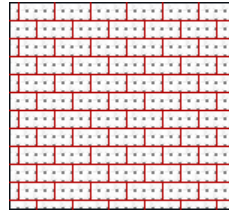
Blackwork Basic
 Page 1



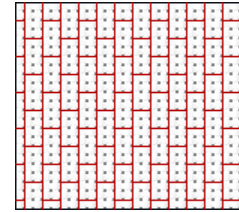
Brick 1



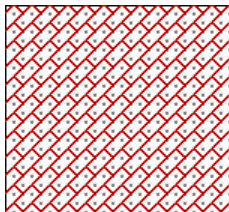
Brick 2



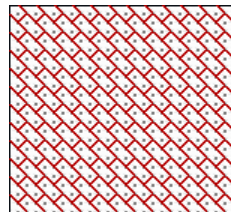
Brick 3



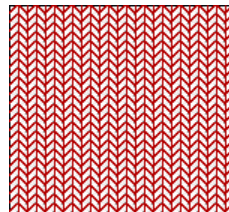
Brick 4



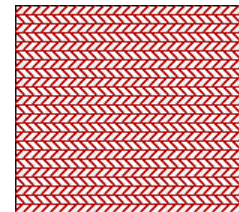
Brick 5



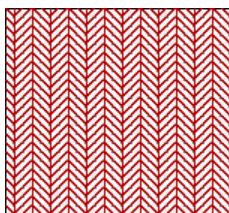
Brick 6



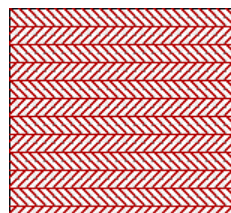
Chevron 1



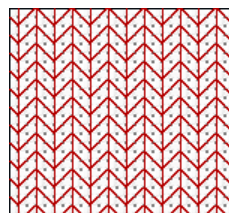
Chevron 2



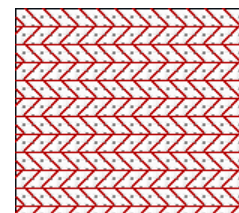
Chevron 3



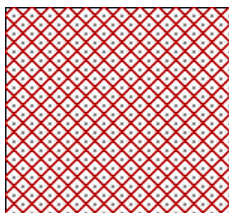
Chevron 4



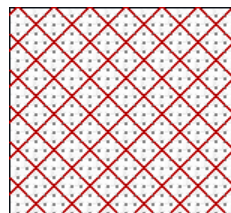
Chevron 5



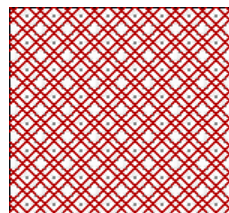
Chevron 6



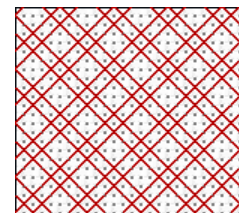
Lattice 1



Lattice 2



Lattice 3

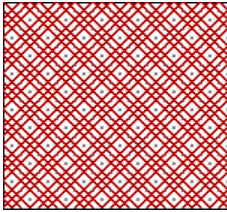


Lattice 4

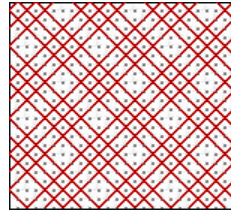
Pattern color changed from black to red for these examples.

Blackwork Basic

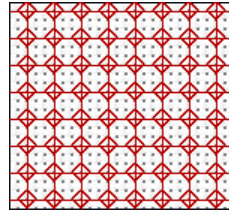
Page 2



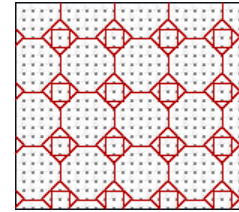
Lattice 5



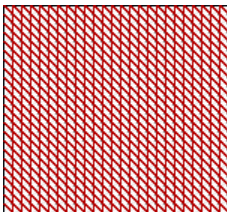
Lattice 6



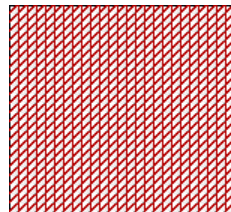
Octagon 1



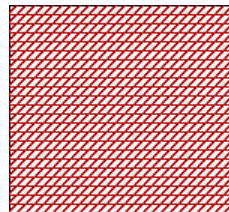
Octagon 2



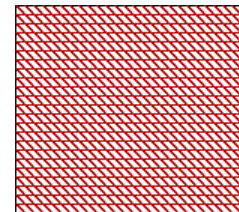
Scale 1



Scale 2



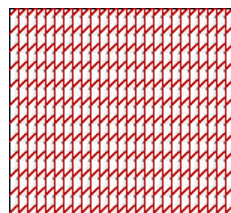
Scale 3



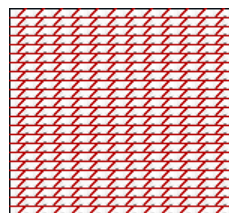
Scale 4



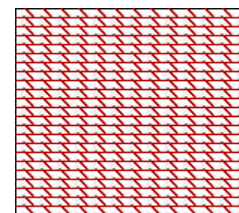
Scale 5



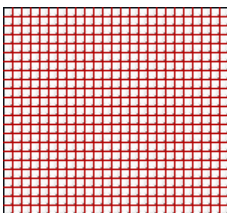
Scale 6



Scale 7



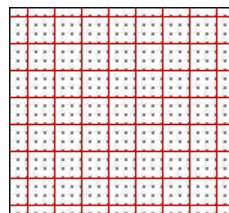
Scale 8



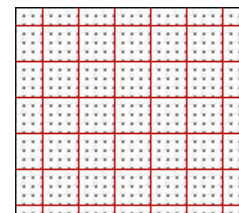
Square 1



Square 2



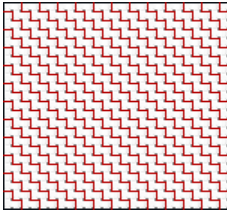
Square 3



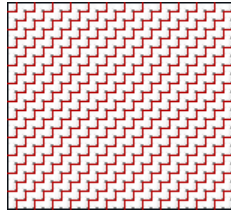
Square 4

Pattern color changed from black to red for these examples.

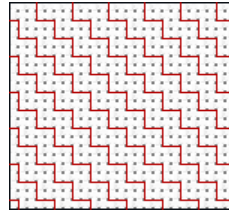
Blackwork Basic
Page 3



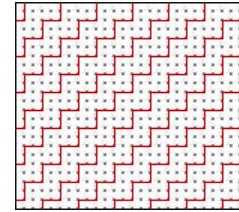
Steps 1



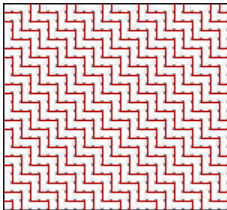
Steps 2



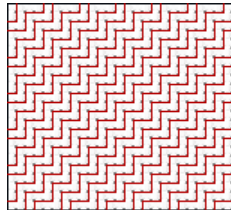
Steps 3



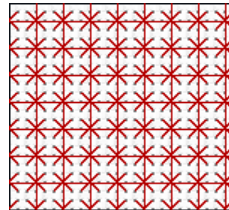
Steps 4



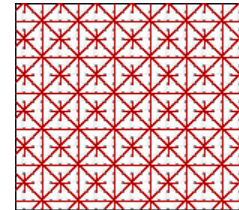
Steps 5



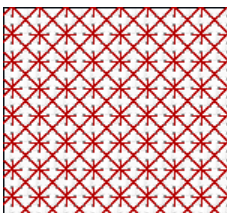
Steps 6



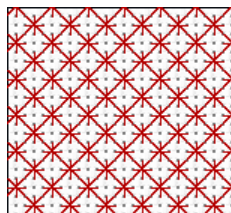
Traditional 1



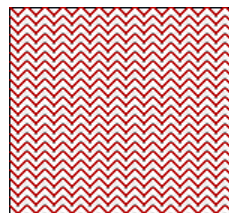
Traditional 2



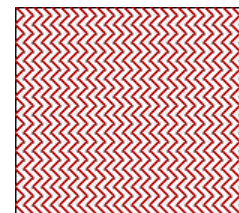
Traditional 3



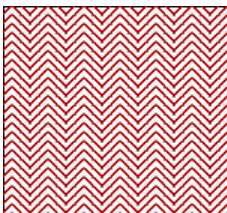
Traditional 4



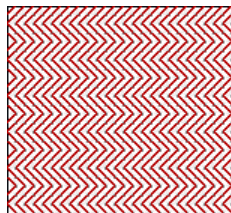
Waves 1



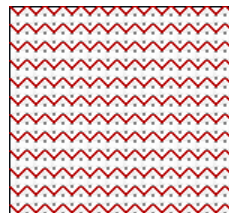
Waves 2



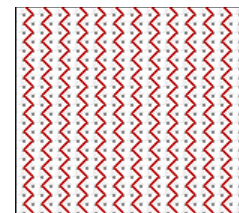
Waves 3



Waves 4



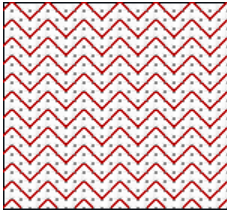
Waves 5



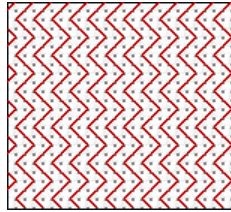
Waves 6

Pattern color changed from black to red for these examples.

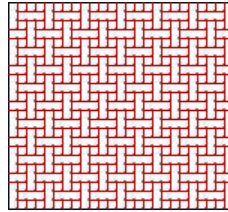
Blackwork Basic
Page 4



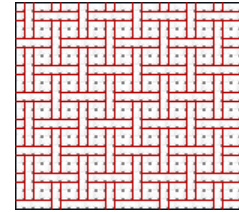
Waves 7



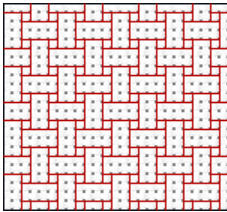
Waves 8



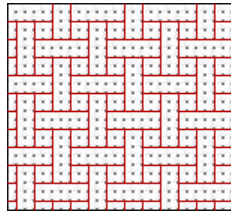
Weave 1



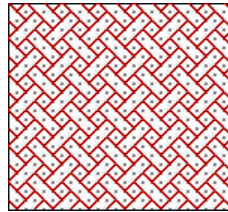
Weave 2



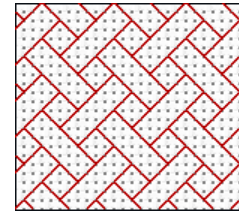
Weave 3



Weave 4



Weave 5

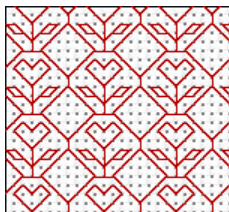


Weave 6

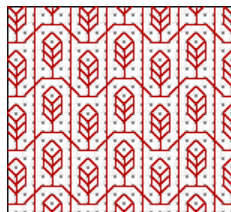
Pattern color changed from black to red for these examples.

Blackwork Fancy

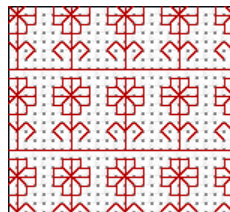
Page 1



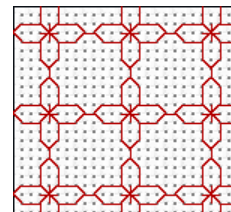
Flower 1



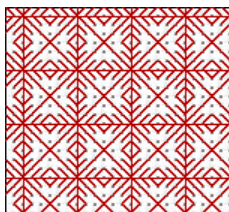
Flower 2



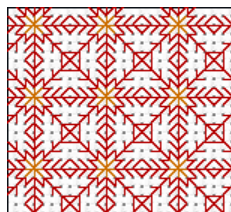
Flower 3



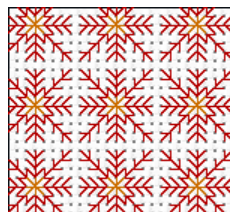
Flower 4



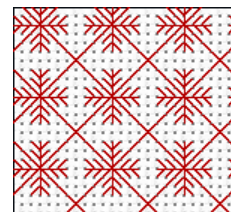
Snowflake 1



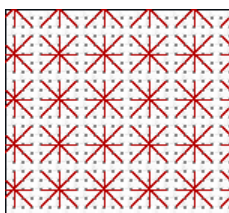
Snowflake 2



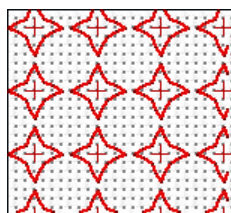
Snowflake 3



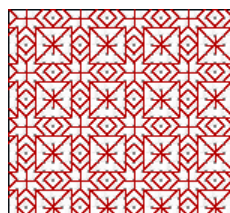
Snowflake 4



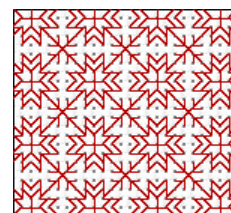
Star 1



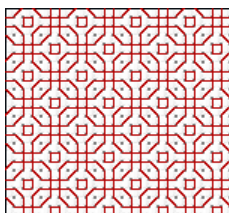
Star 2



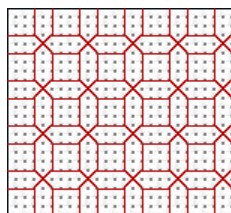
Star 3



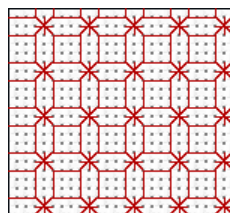
Star 4



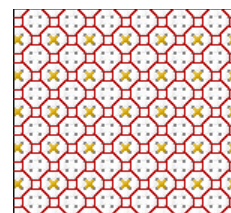
Tile 1



Tile 2



Tile 3

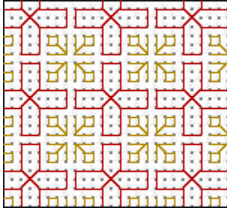


Tile 4

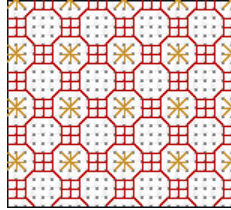
Pattern color changed from black to red for these examples.

Blackwork Fancy

Page 2



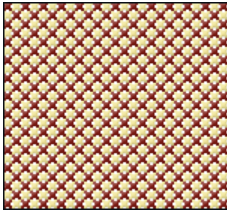
Tile 5



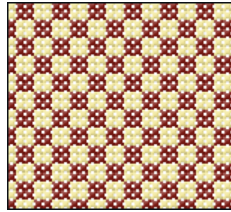
Tile 6

Pattern color changed from black to red for these examples.

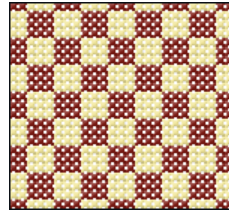
Cross Basic
 Page 1



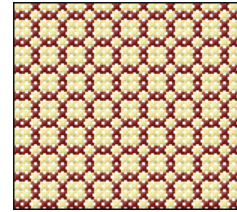
Check 1



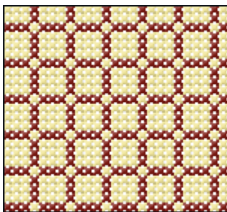
Check 2



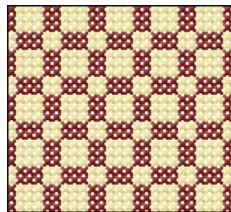
Check 3



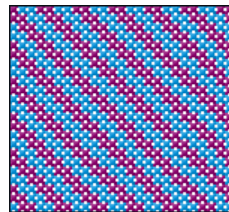
Check 4



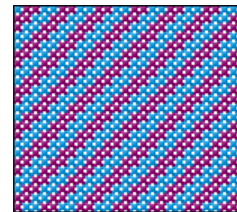
Check 5



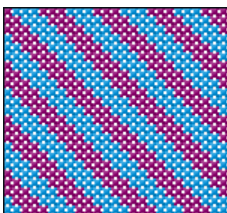
Check 6



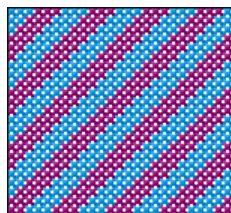
Diagonal 1



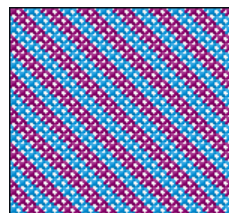
Diagonal 2



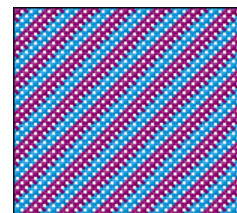
Diagonal 3



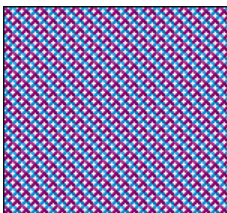
Diagonal 4



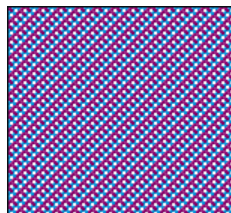
Diagonal 5



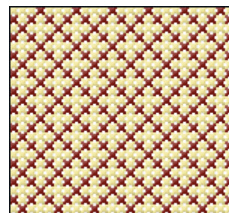
Diagonal 6



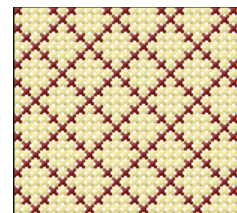
Diagonal 7



Diagonal 8



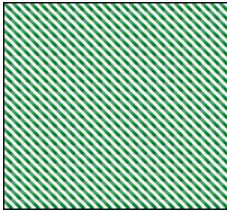
Diamond 1



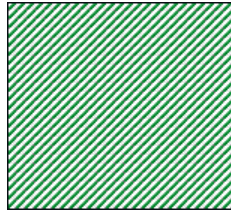
Diamond 2

Examples drawn with Rectangle shape as Filled Backstitch.

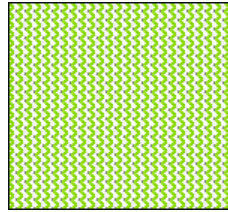
Cross Basic
Page 2



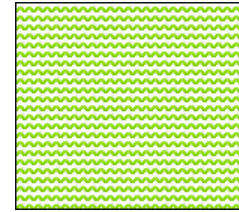
Half Backward



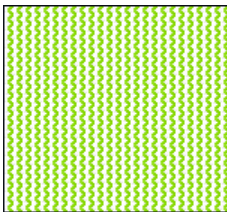
Half Forward



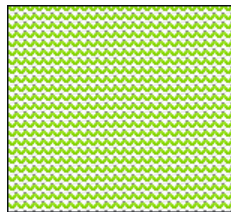
Half Full Left



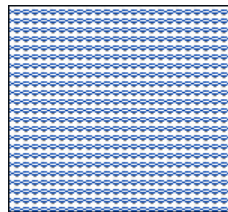
Half Full Low



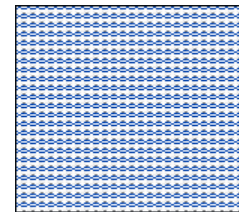
Half Full Right



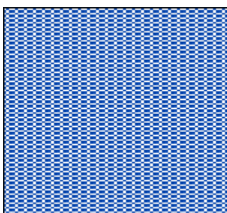
Half Full Top



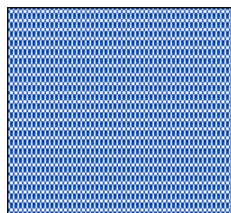
Half Height Low



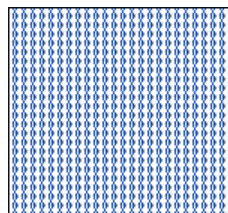
Half Height Top



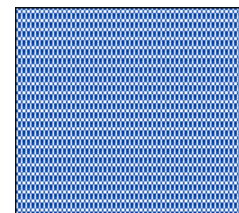
Half Height



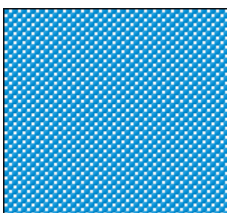
Half Width Left



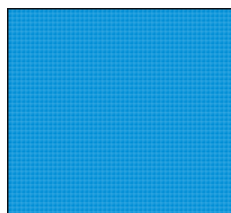
Half Width Right



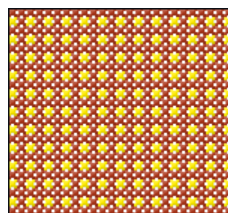
Half Width



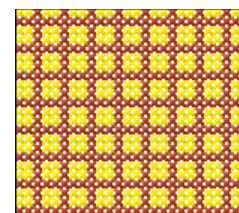
Mini Cross Sparse



Mini Cross



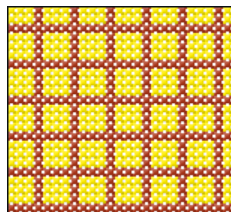
Square 1



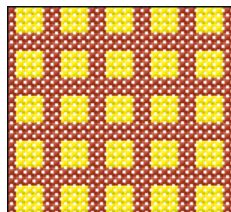
Square 2

Place fill patterns in any of nine shapes.

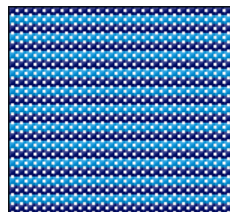
Cross Basic
 Page 3



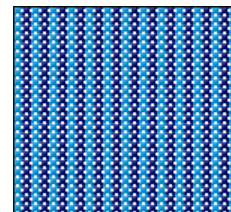
Square 3



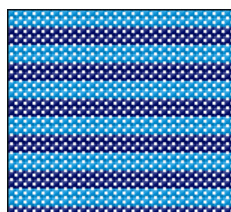
Square 4



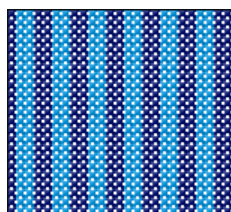
Stripes 1



Stripes 2



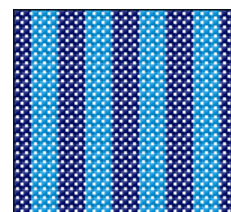
Stripes 3



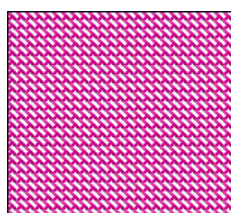
Stripes 4



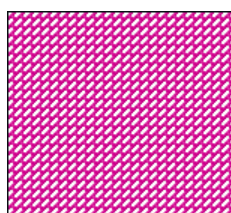
Stripes 5



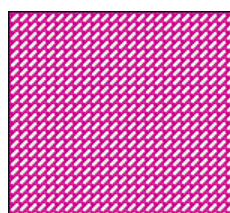
Stripes 6



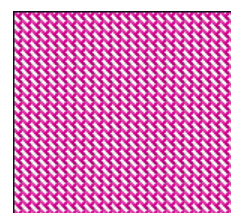
Three Qtr Low Lt



Three Qtr Low Rt



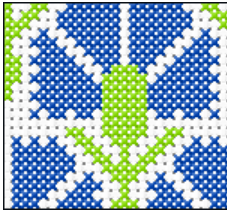
Three Qtr Top Lt



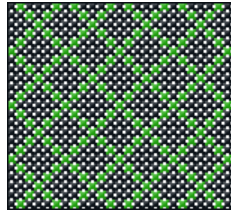
Three Qtr Top Rt

Shapes may be outlined with backstitch, crosses or none.

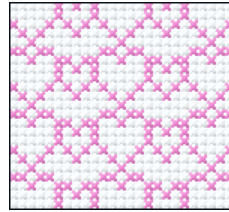
Cross Fancy
Page 1



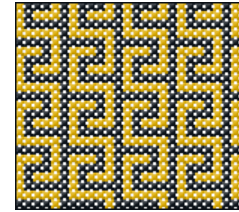
Carnation



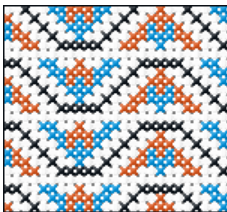
Diamond



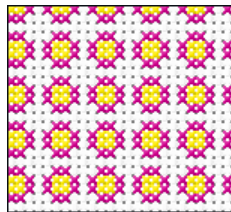
Hearts



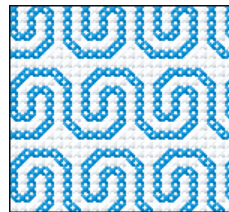
Key 1



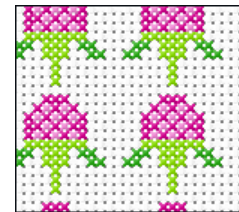
Key 2



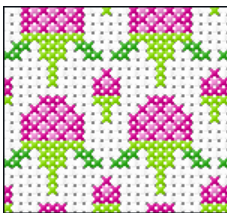
Key 3



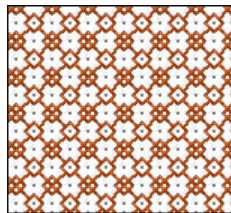
Spiral



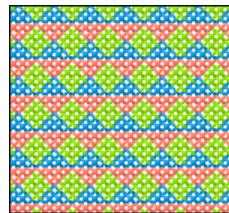
Strawberry 1



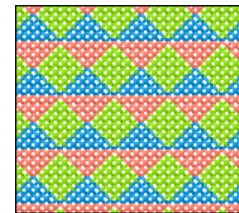
Strawberry 2



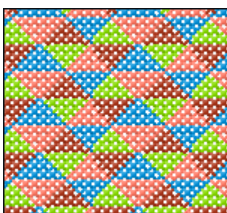
Tile



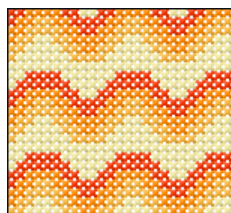
Triangles 1



Triangles 2



Triangles 3

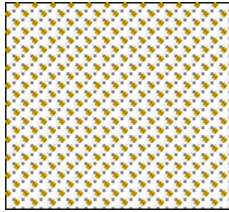


Wave

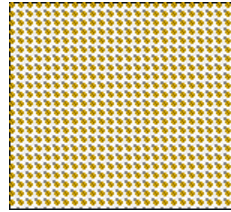
Create your own Fill Patterns, too!

French Knots

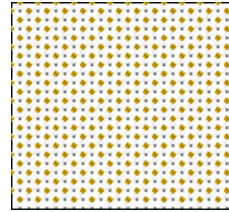
Page 1



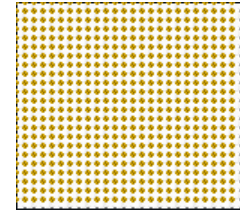
Centers Sparse



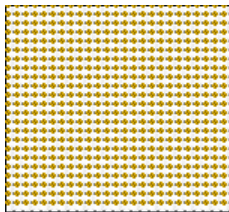
Centers



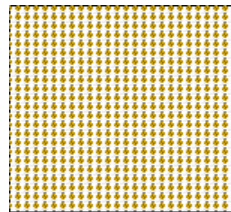
Corners Sparse



Corners



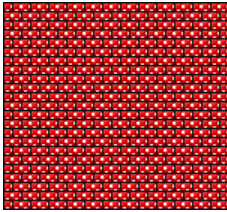
Edges Horizontal



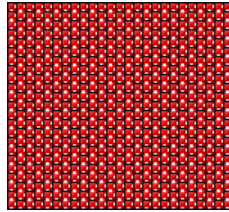
Edges Vertical

French knots are scaled to Cross Size between 2mm and 4mm.

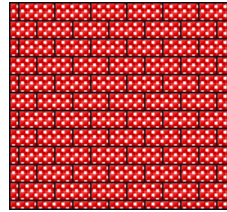
Mixed
Page 1



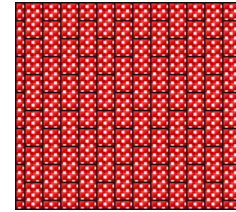
Brick 1



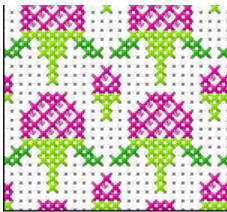
Brick 2



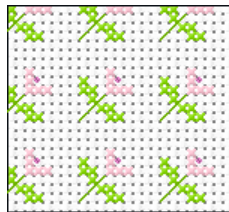
Brick 3



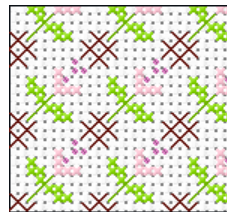
Brick 4



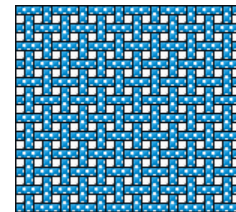
Strawberry



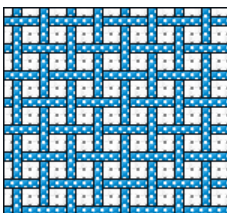
Trellis 1



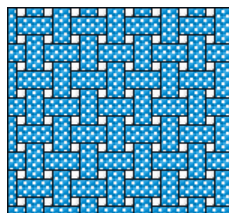
Trellis 2



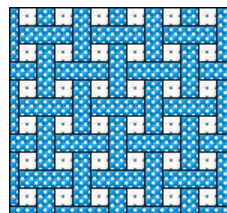
Weave 1



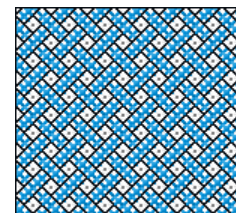
Weave 2



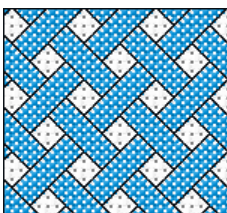
Weave 3



Weave 4



Weave 5



Weave 6

Fill Patterns can contain any mixture of stitch types.